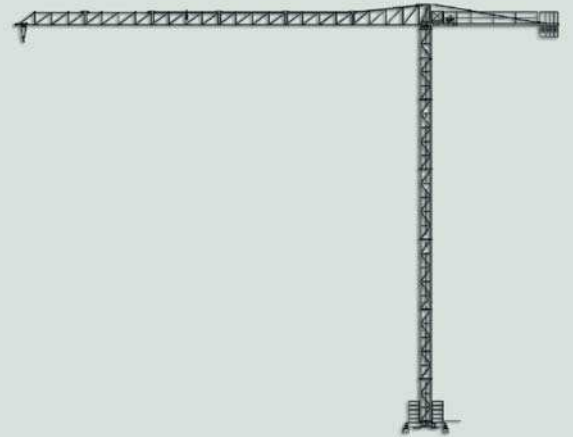


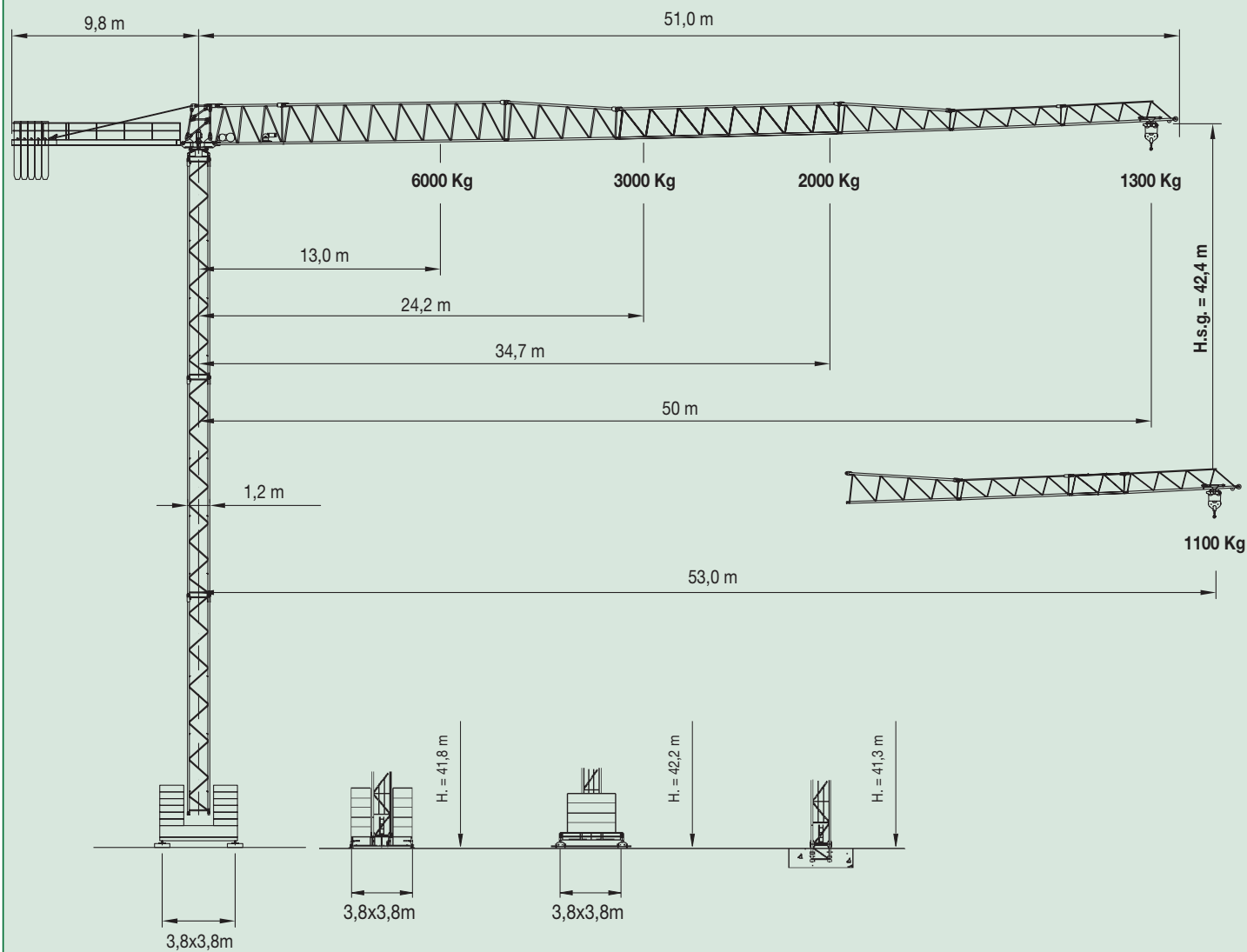


# GRD 53B

*Gru da città senza cuspidè  
Top less city crane  
City kran ohne turmspitze  
City grue sans poinçon*



**RDLIFT**



## GRD 53B

**Gru da città senza cuspid**

Top less city crane

City kran ohne turmspitze

City grue sans poinçon



## Raggi e portate - Radius and s.w.l.

Portata max / Max s.w.l.  
50 m



3000 kg.



Braccio / Jib (m.)

50      46      42      38      34      30      26      24,2

Raggi (m.) Radius (m.)	24											3000
	26										2780	
	30								2360			
	34							2050				
	38					1800						
	42				1600							
	46		1440									
	50	1300										

Portata max / Max s.w.l.  
50 m



6000 kg.



Braccio / Jib (m.)

50      46      42      38      34      30      26      22      18      14      13

Raggi (m.) Radius (m.)	13											6000
	14										5530	
	18									4180		
	22								3350			
	26									2780		
	30								2360			
	34					2050						
	38				1800							
	42			1600								
	46		1440									
	50	1300										

Portata max / Max s.w.l.  
53 m



3000 kg.



Braccio / Jib (m.)

53      50      46      42      38      34      30      26      24,2

Raggi (m.) Radius (m.)	24											3000		
	26										2540			
	30								2160					
	34									1870				
	38										1650			
	42											1460		
	46												1300	
	50													1180
	53	1100												

Portata max / Max s.w.l.  
53 m



6000 kg.



Braccio / Jib (m.)

53      50      46      42      38      34      30      26      22      18      14      13

Raggi (m.) Radius (m.)	13											6000					
	14											5080					
	18										3840						
	22									3070							
	26										2540						
	30											2160					
	34												1870				
	38													1650			
	42														1460		
	46															1300	
	50																1180
	53	1100															

**Altezza sottogancio, zavorra di base, reazioni - H.U.H., max base ballast, corner pressure**

Diagram 1			Diagram 2			Diagram 3			Diagram 4		
HuH (m)	Z (t)	F1 (t.)	HuH (m)	Z (t)	F1 (t.)	HuH (m)	Z (t)	F1 (t.)	HuH (m)	F2 (t.)	F3 (t.)
42,6	60	49	42,0	60	49	42,5	60	49	41,3	87	62
36,7	50	46	36,1	50	46	36,6	50	46	35,4	76	56
30,8	50	43	30,2	50	43	30,7	50	43	29,5	66	47
24,9	40	38	24,3	40	38	24,8	40	38	23,6	59	39
19,0	40	38	18,4	40	38	18,9	40	38	17,7	59	39
13,1	40	38	12,5	40	38	13,0	40	38	11,8	59	39

**Caratteristiche azionamenti principali - General technical characteristics**

Type	Cv	Kw	mt	speed	m/min	Kg	m/min	Kg
3 T	15	11	105	▶	5	3000		
				▶▶	20	3000		
				▶▶▶	40	1500		
6 T	25	18,4	260	▶	7	3000	3,5	6000
				▶▶	30	3000	15	6000
				▶▶▶	60	1500	30	3000

Rotazione - Slewing

giri/min	Nm
0,0-1,1	2x60
inverter	

Carello - Trolley

m/min	Kw	cv
30/60	2,2	3
inverter		

Traslazione - Rail

m/min	Kw
15	2x3
inverter	

Forza motrice totale - Total installed power

22 Kw (15Hp)	30 Kw (25Hp)
--------------	--------------

**Gru da città senza cuspidi - Top less city crane**  
 City kran ohne turmspitze - City grue sans poinçon

**GRD 53B**



# RDLIFT

**RDLIFT srl**

Via Emilia San Pietro, 25  
42100 Reggio Emilia - Italy

Tel. +39 0522 448511 - Fax +39 0522 448540  
commerciale@rdlift.com

[www.rdlift.com](http://www.rdlift.com)

Dati illustrativi non impegnativi  
con riserva di modifica senza  
preavviso.

Specifications and data not  
binding subject to modification without  
notice.

Angaben und Beschreibung  
unverbindlich andreungen  
vorbehalten ohne weitere mitteilung.

Données techniques seulement  
indicatives modifications réservées  
sans préavis

Agente - Dealer